

DE DIMORA

PREVIEW 2024





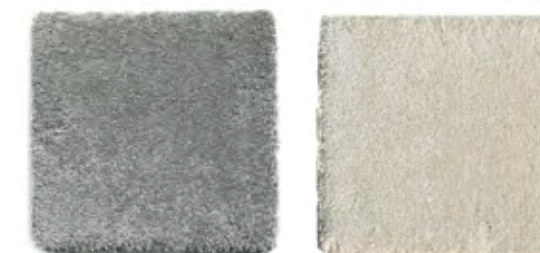


001

002

017

149



233

241

## ASTER

**COMPOSIZIONE: 100% POLIPROPILENE**  
**PRODUZIONE: MECCANIZZATO**  
**SPESORE: 23 MM**  
**PESO TOTALE: 2.800 GR/MQ**  
**POSSIBILITÀ DI TAGLIO SU MISURE ESISTENTI**  
**LAVABILE IN LAVATRICE MAX 30 GRADI**

**COMPOSITION: 100% POLYPROPILÈNE**  
**PRODUCTION: MÉCANIQUE**  
**EPAISSEUR TOTALE: 23 MM**  
**POIDS TOTAL: 2.800 GR/M2**  
**POSSIBILITÉ DE COUPER DES MESURES EXISTANTES**  
**LAVABLE À LA MACHINE MAX 30 DEGRÈS**

**COMPOSITION: 100% POLYPROPYLENE**  
**PRODUCTION: MACHINE MADE**  
**THICKNESS: 23 MM**  
**TOTAL WEIGHT: 2.800 GR/SQM**  
**POSSIBILITY OF CUTTING EXISTING MEASURES**  
**MACHINE WASHABLE MAX 30 DEGREES**

ASTER	60 X 115	70 X 140	140 X 200	160 X 230	200 X 290	240 X 340
	X	X	X	X	X	X





857\_789



859\_547



859\_588



864\_518



865\_698

## ATENA

COMPOSIZIONE: 80% LANA - 10% VISCOSA - 10% COTONE  
 PRODUZIONE: TUFTATO A MANO  
 SPESSORE: 9 MM  
 PESO TOTALE: 4.250 GR/MQ

COMPOSITION: 80% LAINE - 10% VISCOSE - 10% COTON  
 PRODUCTION: TUFTÉ MAIN  
 EPAISSEUR TOTALE: 9 MM  
 POIDS TOTAL: 4.250 GR/M2

COMPOSITION: 80% WOOL - 10% VISCOSE - 10% COTTON  
 PRODUCTION: HAND-TUFT  
 THICKNESS: 9 MM  
 TOTAL WEIGHT: 4.250 GR/SQM

ATENA	160 X 230	200 X 290	240 X 340
	X	X	X





38307-033

38309-073

38312-623

38312-673

## COPENAGHEN

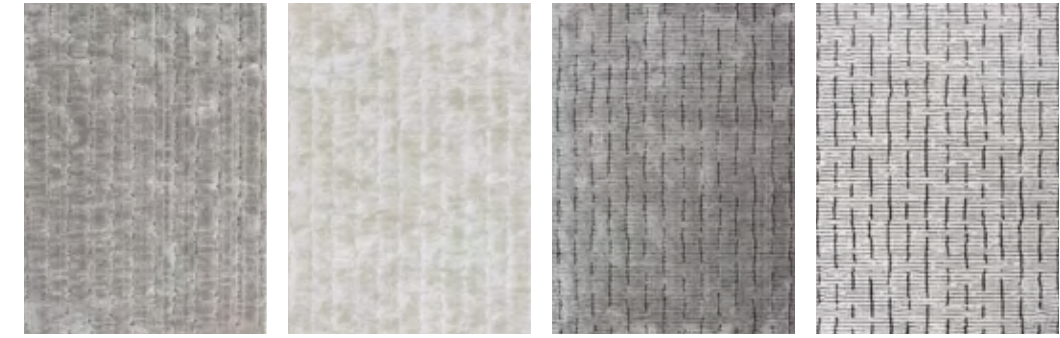
**COMPOSIZIONE: 100% POLIPROPILENE**  
**PRODUZIONE: MECCANIZZATO**  
**SPESORE TOTALE: 9 MM**  
**PESO TOTALE: 1.550 GR/MQ**  
**POSSIBILITÀ DI TAGLIO SU MISURE ESISTENTI**

**COMPOSITION: 100% POLYPROPILÉNE**  
**PRODUCTION: MÉCANIQUE**  
**EPAISSEUR TOTALE: 9 MM**  
**POIDS TOTAL: 1.550 GR/M2**  
**POSSIBILITÉ DE COUPER DES MESURES EXISTANTES**

**COMPOSITION: 100% POLYPROPYLENE**  
**PRODUCTION: MACHINE MADE**  
**THICKNESS: 9 MM**  
**TOTAL WEIGHT: 1.550 GR/SQM**  
**POSSIBILITY OF CUTTING EXISTING MEASURES**

COPENAGHEN	80 X 150	120 X 170	160 X 230	200 X 290
	X	X	X	X





14001-2181

14001-6292

14002-2131

14002-6131

## DEMETRA

**COMPOSIZIONE: 100% POLIESTERE**  
**PRODUZIONE: MECCANIZZATO**  
**SPESORE : 25 MM**  
**PESO TOTALE : 3.300 GR/MQ**  
**POSSIBILITÀ DI TAGLIO SU MISURE ESISTENTI**

**COMPOSITION: 100% POLYESTER**  
**PRODUCTION: MÉCANIQUE**  
**ÉPAISSEUR : 25 MM**  
**POIDS TOTAL: 3.300 GR/M2**  
**POSSIBILITÉ DE COUPER DES MESURES EXISTANTES**

**COMPOSITION: 100% POLYESTER**  
**PRODUCTION: MACHINE MADE**  
**THICKNESS: 25 MM**  
**TOTAL WEIGHT: 3.300 GR/SQM**  
**POSSIBILITY OF CUTTING EXISTING MEASURES**

DEMETRA	160 X 230	200 X 290	240 X 340
	X	X	X



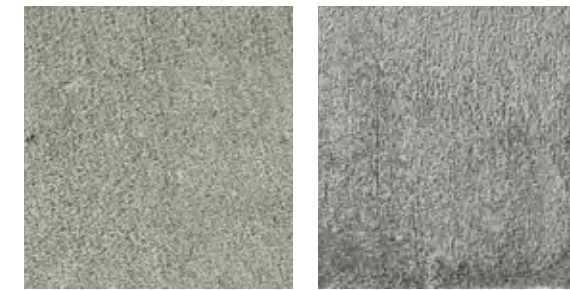


001

002

008

009



017

233

## ESTIA

**COMPOSIZIONE: 100% POLIPROPILENE**  
**PRODUZIONE: MECCANIZZATO**  
**SPESORE TOTALE: 14 MM**  
**PESO TOTALE: 1.550 GR/MQ**  
**POSSIBILITÀ DI TAGLIO SU MISURE ESISTENTI**  
**LAVABILE IN LAVATRICE MAX 30 GRADI**

**COMPOSITION: 100% POLYPROPILÉNE**  
**PRODUCTION: MÉCANIQUE**  
**EPAISSEUR TOTALE: 14 MM**  
**POIDS TOTAL: 1.550 GR/M2**  
**POSSIBILITÉ DE COUPER DES MESURES EXISTANTES**  
**LAVABLE À LA MACHINE MAX 30 DEGRÈS**

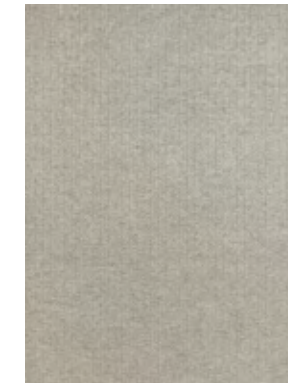
**COMPOSITION: 100% POLYPROPYLENE**  
**PRODUCTION: MACHINE MADE**  
**THICKNESS: 14 MM**  
**TOTAL WEIGHT: 1.550 GR/SQM**  
**POSSIBILITY OF CUTTING EXISTING MEASURES**  
**MACHINE WASHABLE MAX 30 DEGREES**

ESTIA	60 X 115	70 X 140	140 X 200	160 X 230	200 X 290	240 X 340
	X	X	X	X	X	X





241-174430



241-174490



## INTRECCIO

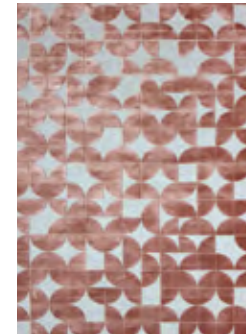
**COMPOSIZIONE: 70% LANA + 30% VISCOSA**  
**PRODUZIONE: MECCANIZZATO**  
**SPESORE : TESSUTO A PIATTO**  
**PESO TOTALE : 1.600 GR/MQ**  
**POSSIBILITÀ DI TAGLIO SU MISURE ESISTENTI**

**COMPOSITION: 70% LAINE + 30% VISCOSE**  
**PRODUCTION: MÉCANIQUE**  
**ÉPAISSEUR : TISSÉ À PLAT**  
**POIDS TOTAL: 1.600 GR/M2**  
**POSSIBILITÉ DE COUPER DES MESURES EXISTANTES**

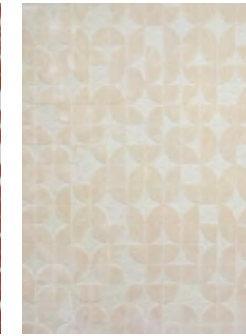
**COMPOSITION: 70% WOOL + 30% VISCOSE**  
**PRODUCTION: MACHINE MADE**  
**THICKNESS: FLATWOVEN**  
**TOTAL WEIGHT: 1.600 GR/MQ**  
**POSSIBILITY OF CUTTING EXISTING MEASURES**

INTRECCIO	140 X 200	160 X 230	200 X 290	240 X 340	SU MISURA SUR MESURE CUSTOMISED SIZE
	X	X	X	X	X

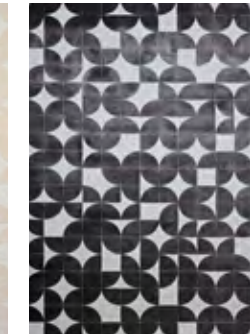




1183-474048



1183-474054



1183-475043



1183-475055



1183-477041

## LIPARI NEW

**COMPOSIZIONE: 50% VISCOSA + 50% LANA**  
**PRODUZIONE: MECCANIZZATO**  
**SPESORE : 4 MM**  
**PESO TOTALE : 1.550 GR/MQ**  
**POSSIBILITÀ DI TAGLIO SU MISURE ESISTENTI**

**COMPOSITION: 50% VISCOSE + 50% LAINE**  
**PRODUCTION: MÉCANIQUE**  
**ÉPAISSEUR : 4 MM**  
**POIDS TOTAL: 1.550 GR/M2**  
**POSSIBILITÉ DE COUPER DES MESURES EXISTANTES**

**COMPOSITION: 50% VISCOSE + 50% WOOL**  
**PRODUCTION: MACHINE MADE**  
**THICKNESS: 4 MM**  
**TOTAL WEIGHT: 1.550 GR/MQ**  
**POSSIBILITY OF CUTTING EXISTING MEASURES**

LIPARI	140 X 200	160 X 230	200 X 290	240 X 340	SU MISURA SUR MESURE CUSTOMISED SIZE
	X	X	X	X	X





001



002



008



017



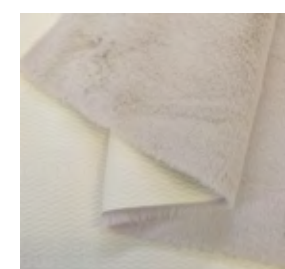
030



233



241



994

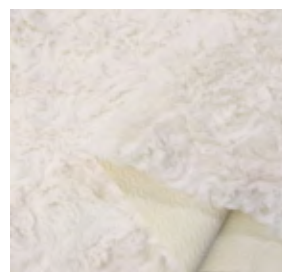
## PRIZMA SOFT

COMPOSIZIONE: 100 % POLIESTERE  
PRODUZIONE: MECCANIZZATO  
SPESORE : 20 MM  
PESO TOTALE : 1.400 GR/MQ  
DISPONIBILE SU MISURA: ROTOLI LARGHEZZA 1,5 MT  
LAVABILE IN LAVATRICE MAX 30 GRADI

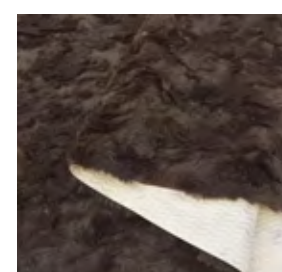
COMPOSITION: 100 % POLYESTER  
PRODUCTION: MÉCANIQUE  
ÉPAISSEUR : 20 MM  
POIDS TOTAL: 1.400 GR/M2  
SERVICE SUR MESURE: ROULEAU D'UNE LARGEUR DE 1,5 MT  
LAVABLE À LA MACHINE MAX 30 DEGRÈS

COMPOSITION: 100 % POLYESTER  
PRODUCTION: MACHINE MADE  
THICKNESS: 20 MM  
TOTAL WEIGHT: 1.400 GR/MQ  
CUSTOM SIZE SERVICE: ROLL WITH WIDTH 1.5 MT  
MACHINE WASHABLE MAX 30 DEGREES

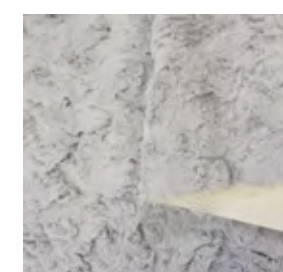




001



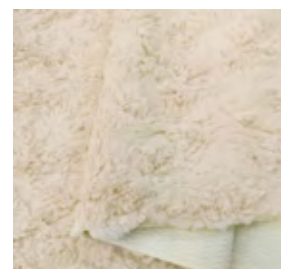
008



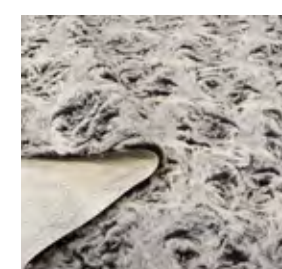
017



233



241



392

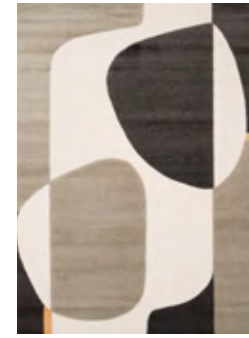
## PRIZMA WAVE

**COMPOSIZIONE: 100 % POLIESTERE**  
**PRODUZIONE: MECCANIZZATO**  
**SPESORE : 10 MM**  
**PESO TOTALE : 1.080 GR/MQ**  
**DISPONIBILE SU MISURA: ROTOLI LARGHEZZA 1,5 MT**  
**LAVABILE IN LAVATRICE MAX 30 GRADI**

**COMPOSITION: 100 % POLYESTER**  
**PRODUCTION: MÉCANIQUE**  
**EPAISSEUR : 10 MM**  
**POIDS TOTAL: 1.080 GR/M2**  
**SERVICE SUR MESURE: ROULEAU D'UNE LARGEUR DE 1,5 MT**  
**LAVABLE À LA MACHINE MAX 30 DEGRÈS**

**COMPOSITION: 100 % POLYESTER**  
**PRODUCTION: MACHINE MADE**  
**THICKNESS: 10 MM**  
**TOTAL WEIGHT: 1.080 GR/MQ**  
**CUSTOM SIZE SERVICE: ROLL WITH WIDTH 1.5 MT**  
**MACHINE WASHABLE MAX 30 DEGREES**





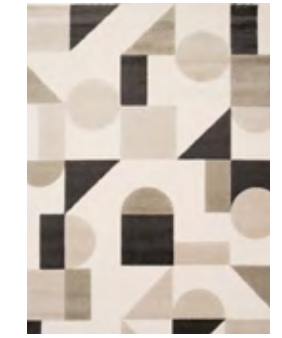
33609/314



33614/341



33618/341



33622/351

## STOCCOLMA

**COMPOSIZIONE: 60 % POLIPROPILENE - 40% POLIESTERE**  
**PRODUZIONE: MECCANIZZATO**  
**SPESORE : 6 MM**  
**PESO TOTALE : 1.400 GR/MQ**  
**POSSIBILITÀ DI TAGLIO SU MISURE ESISTENTI**

**COMPOSITION: 60 % POLYPROPILÉNE - 40% POLYESTER**  
**PRODUCTION: MÉCANIQUE**  
**EPAISSEUR : 6 MM**  
**POIDS TOTAL: 1.400 GR/M2**  
**POSSIBILITÉ DE COUPER DES MESURES EXISTANTES**

**COMPOSITION: 60 % POLYPROPYLENE - 40% POLYESTER**  
**PRODUCTION: MACHINE MADE**  
**THICKNESS: 6 MM**  
**TOTAL WEIGHT: 1.400 GR/MQ**  
**POSSIBILITY OF CUTTING EXISTING MEASURES**

STOCCOLMA	80 X 150	120 X 170	160 X 230	200 X 290
	X	X	X	X





**DE DIMORA**  
COLLECTION PREVIEW 2024

**DE DIMORA**  
CONTEMPORARY RUGS

[INFO@DEDIMORA.IT](mailto:INFO@DEDIMORA.IT) - [CONTACT@DEDIMORA.IT](mailto:CONTACT@DEDIMORA.IT)  
[WWW.DEDIMORA.IT](http://WWW.DEDIMORA.IT)